

# PACIFIC PILOTAGE AUTHORITY

1000 – 1130 West Pender Street  
Vancouver, B.C  
V6E 4A4



---

## NOTICE TO INDUSTRY

**Date Issued:** 21 July 2015 (**updated April 19, 2016**)

**Notice Number:** 07/2015  
(replaces Notice 04/2015)

**Subject:** Southern Gulf Island Anchorages

**Geographic Area:** Cowichan Bay, Ladysmith, Plumper Sound

**Communication:** Ships have anchored in various locations around the Southern Gulf Islands. While some of these existing anchorage locations have become unusable due to the growth in ship sizes, other locations have come to cause social concerns for nearby residents.

**Details:** The amended anchor locations indicated for Cowichan Bay, Ladysmith & Plumper Sound on pages 2, 3 & 4 will be used on a trial basis for 12 months, commencing 21 May 2015. A review will be conducted on completion of the 12-month trial period. Anchor position information on charts and other nautical publications will be amended, if required, subsequent to the review.

The numbers of anchorages in Plumper Sound remains at five but the positions have been shifted. Anchorage X-ray is allocated for emergency use only.

The number of anchorages in Cowichan Bay has been reduced to six (from eight) and the positions have been shifted.

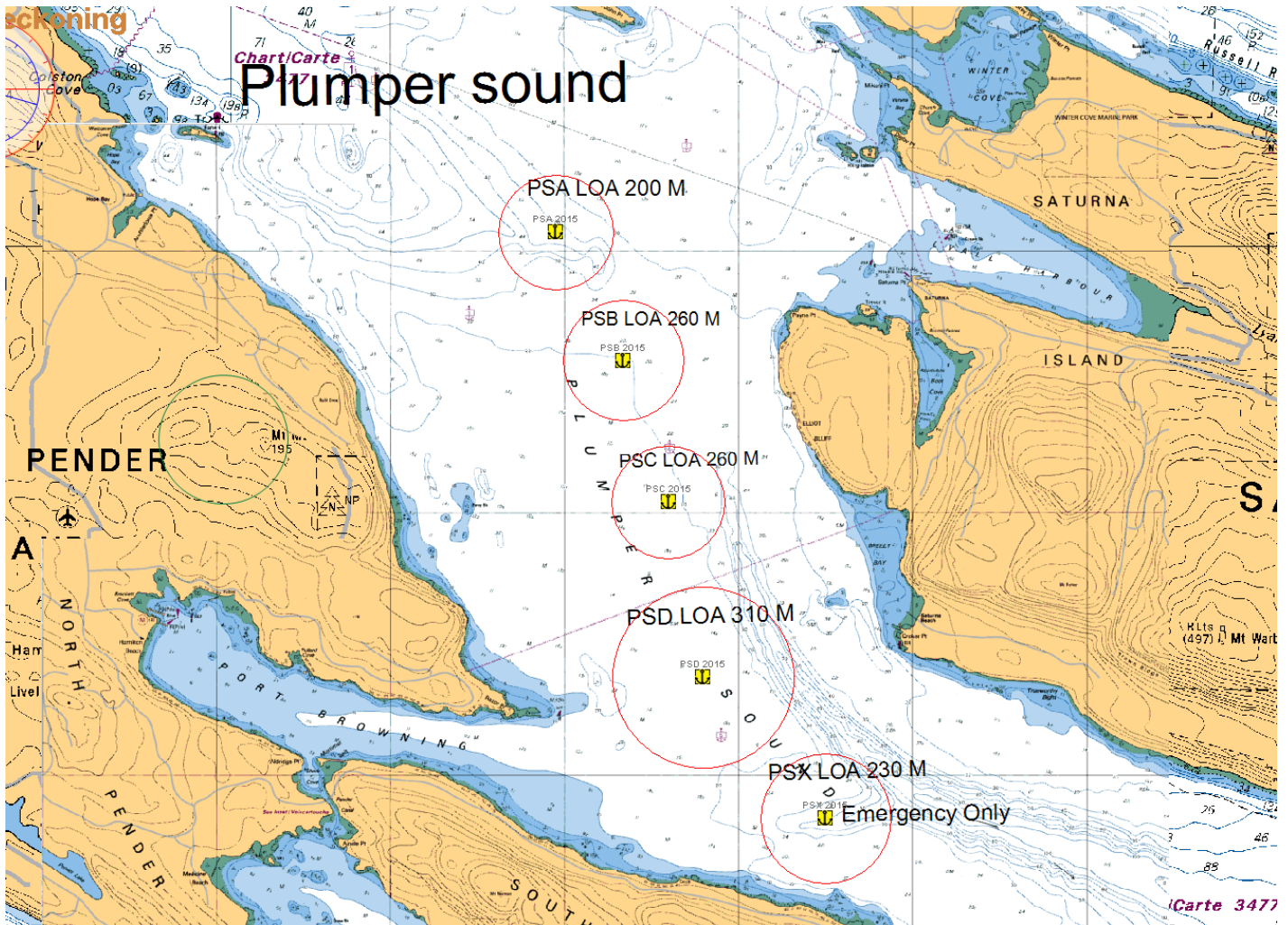
The number of anchorages in Ladysmith has been reduced to six (from seven) and the positions have been shifted.

The updated names and coordinates of the new anchorage positions in these three areas are as indicated in the respective diagrams and tables in the following pages.

Existing anchorage locations in Houston Pass & Trincomali Channel are indicated on page 5.

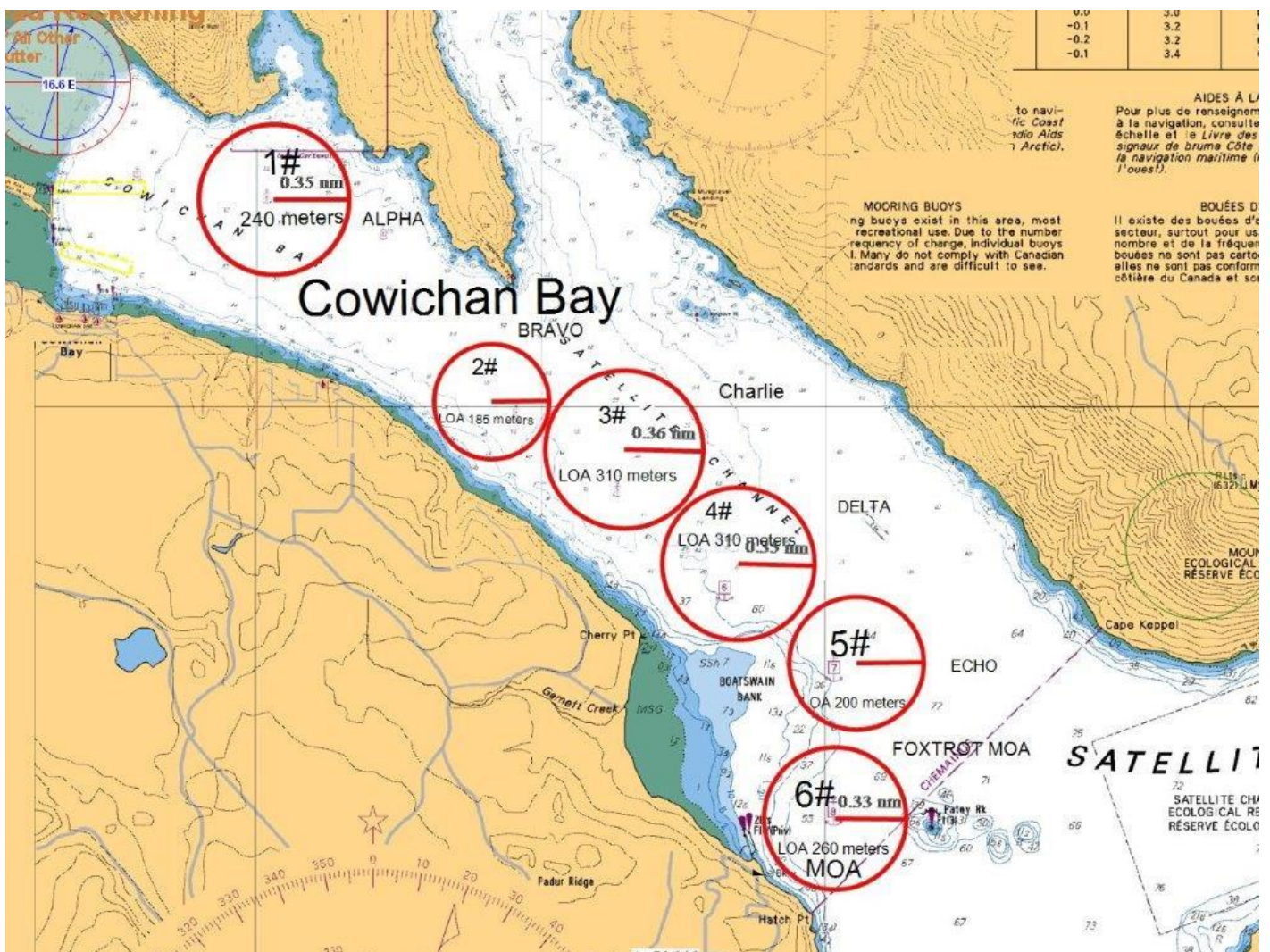
# Plumper Sound

New Name	Latitude (N)	Longitude (W)	Max. LOA (metres)	Depth (metres)	Swing Radius
A	48° 48.05'	123° 14.12'	200	35	2.2 cables
B	48° 47.56'	123° 13.73'	260	20	2.3 cables
C	48° 47.02'	123° 13.47'	260	18	2.2 cables
D	48° 46.35'	123° 13.27'	310	15	3.5 cables
X	48° 45.81'	123° 12.56'	<b>230</b>	40	2.5 cables



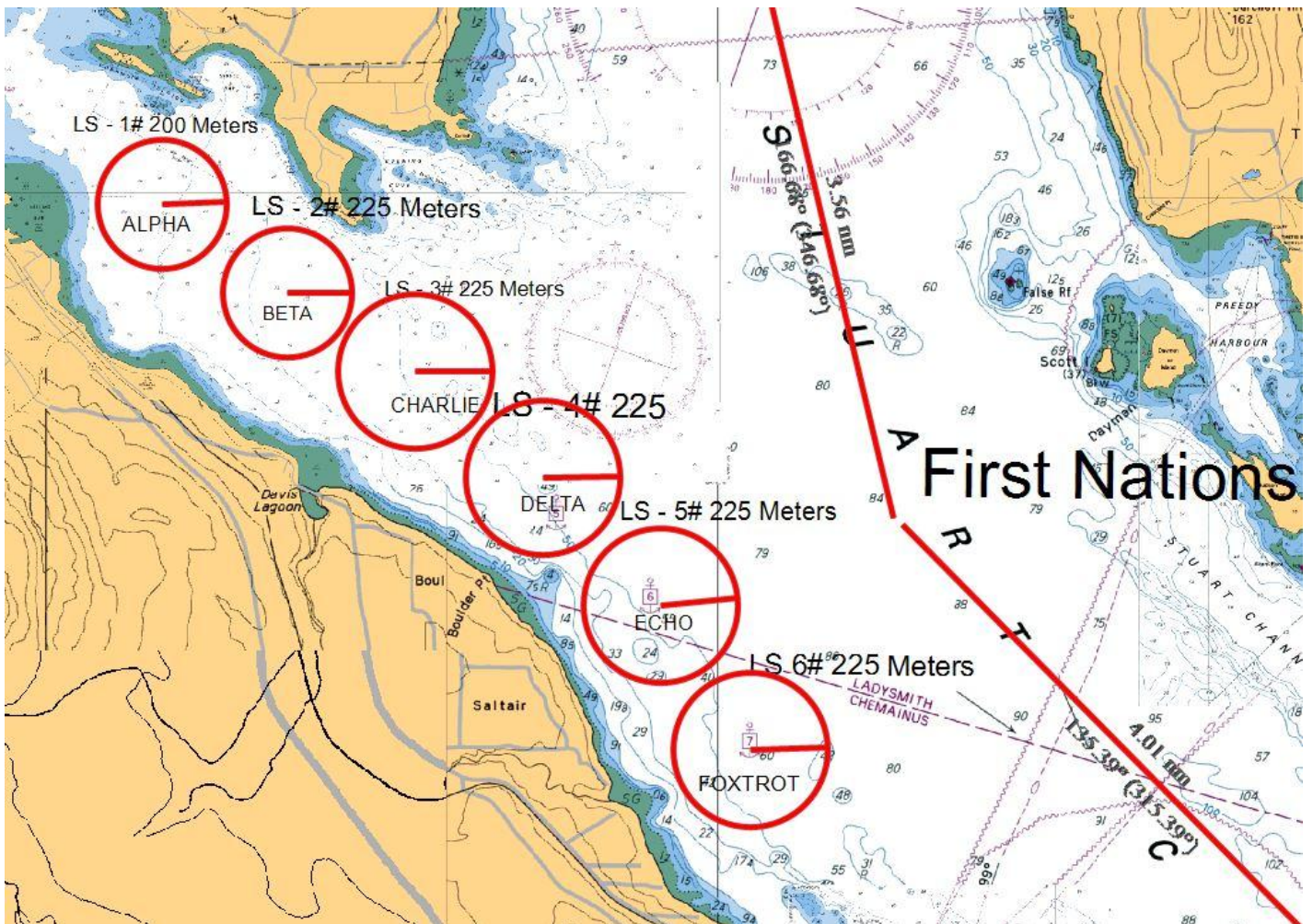
# Cowichan Bay

New Name	Latitude (N)	Longitude (W)	Max. LOA (metres)	Depth (metres)	Swing Radius
A	48° 44.96'	123° 35.86'	240	55	3.5 cables
B	48° 44.02'	123° 34.35'	185	55	2.6 cables
C	48° 43.80'	123° 33.40'	310	60	3.6 cables
D	48° 43.27'	123° 32.60'	310	65	3.5 cables
E	48° 42.80'	123° 31.78'	200	70	3.1 cables
F	48° 42.08'	123° 31.94'	260	60	3.3 cables



# Ladysmith

New Name	Latitude (N)	Longitude (W)	Max. LOA (metres)	Depth (metres)	Swing Radius
A	48° 58.95'	123° 47.30'	200	18	2.5 cables
B	48° 58.60'	123° 46.50'	225	35	2.5 cables
C	48° 58.30'	123° 45.80'	225	60	3.0 cables
D	48° 57.86'	123° 45.06'	225	50	3.0 cables
E	48° 57.39'	123° 44.36'	225	50	3.0 cables
F	48° 56.80'	123° 43.79'	225	60	3.0 cables



## Houston Pass & Trincomali Channel Anchorages

Name	Latitude (N)	Longitude (W)	Max. LOA (metres)	Depth (metres)	Swing Radius
Houston Pass #1	48° 57.38'	123° 37.07'	200.00	24.0	2.5 cables
Houston Pass #2	48° 56.68'	123° 37.08'	183.00	31.0	2.0 cables
Houston Pass #3	48° 56.09'	123° 37.02'	200.00	28.0	2.5 cables
Trincomali #1	49° 01.09'	123° 37.77'	310.00	43.0	3.0 cables
Trincomali #2	49° 01.39'	123° 39.98'	310.00	36.0	3.0 cables
Trincomali #3	49° 01.94'	123° 38.77'	265.00	38.0	3.0 cables
Trincomali #4	49° 02.16'	123° 41.03'	310.00	43.0	3.0 cables
Trincomali #5	49° 02.69'	123° 39.76'	265.00	41.0	3.0 cables
Trincomali #6	49° 03.19'	123° 41.11'	310.00	55.0	3.0 cables
Trincomali #7	49° 05.32'	123° 41.78'	260.00	57.0	3.0 cables
Trincomali #8	49° 06.08'	123° 42.77'	260.00	58.0	3.0 cables
Trincomali #9	49° 06.92'	123° 43.70'	260.00	55.0	3.0 cables

*Vessels with an overall length of 240 metres or greater require daylight to transit between Portlock Point & Trincomali Channel.*

If there are any queries, concerns or a wish to meet to further discuss the contents of this notice, please contact the PPA [marineops@ppa.gc.ca](mailto:marineops@ppa.gc.ca) or by telephone at 604-666-6771.

Brian Young  
Director, Marine Operations